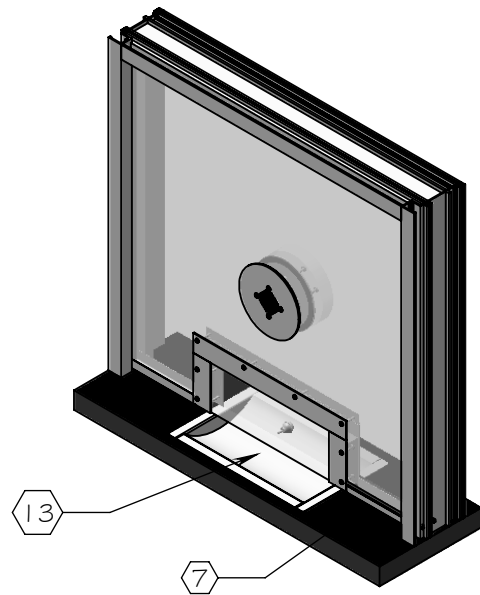
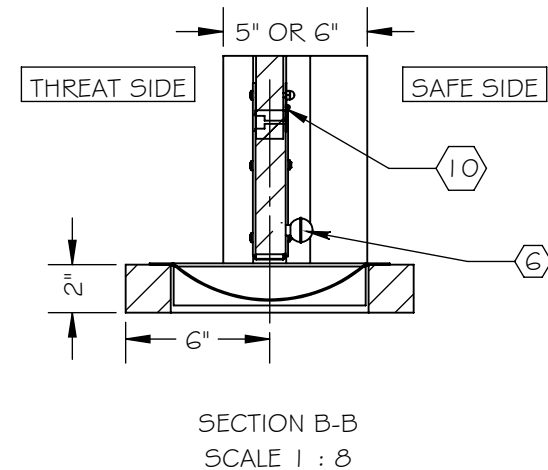
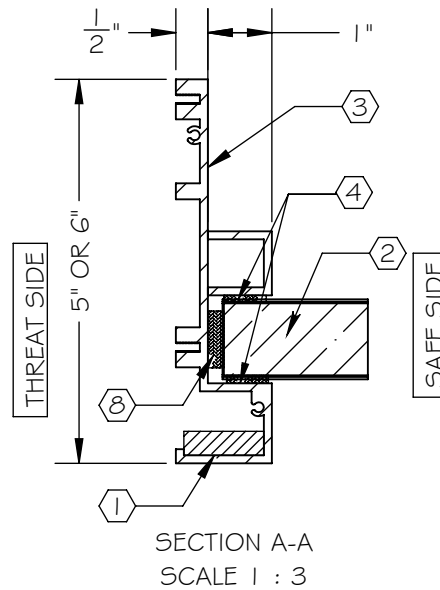
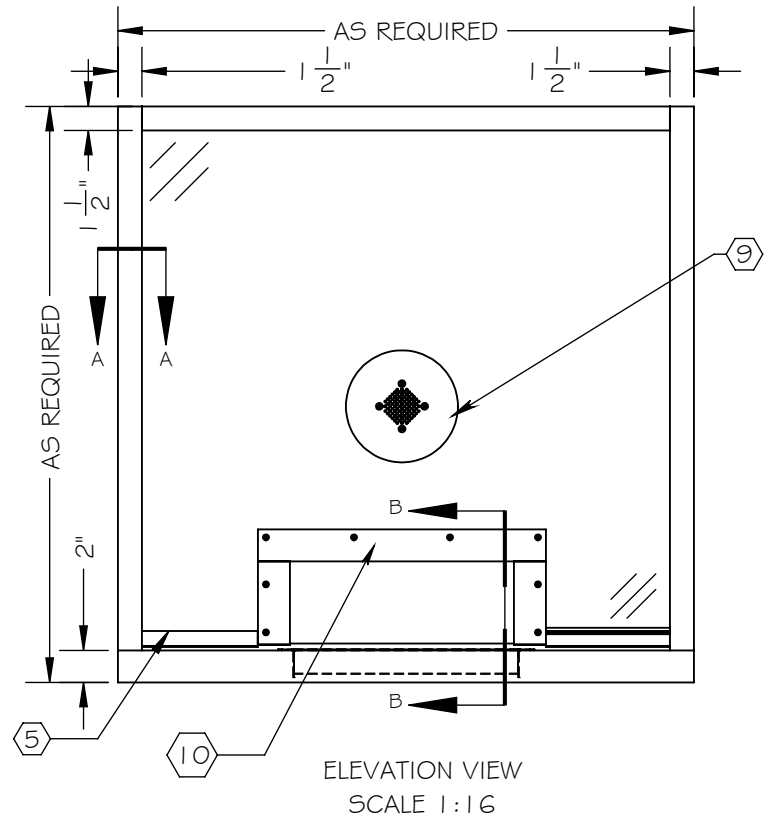


NOTES:

- ① ARMORTEX® BULLET RESISTANT ARMOR
- ② ARMORTEX® BULLET RESISTANT GLAZING
- ③ EXTRUDED ALUMINUM FRAME (CLEAR ANODIZED)
- ④ GLAZING TAPE
- ⑤ STAINLESS STEEL GLAZING CAP
- ⑥ PULL AND SECURITY LATCH
- ⑦ HIGH PRESSURE BLACK LAMINATED PLASTIC SHELF (STAINLESS STEEL OPTIONAL)
- ⑧ NEOPRENE SETTING BLOCK
- ⑨ SPEAKER
- ⑩ STAINLESS STEEL CONTINUOUS HINGE
- ⑪ STAINLESS STEEL ASTRAGAL (BOTH ENDS AND BOTH SIDES)
- ⑫ ANCHORS AS REQUIRED (BY OTHERS) (NOT SHOWN)
- ⑬ STAINLESS STEEL DEAL TRAY



SCALE: AS NOTED	TITLE: TRANSACTION WINDOW HINGED PANNEL	UNLESS OTHERWISE SPECIFIED: DIMENSIONS ARE IN INCHES TOLERANCES: FRACTIONAL: ±1/16" ANGULAR: ±1° TWO PLACE DECIMAL ±.01 THREE PLACE DECIMAL ±.005
DATE: 06-22-2015	MODEL: WI -TW-AL-HP	
DRAWN BY: M. FREEMAN	SHEET NUMBER: 1 OF 1	

ARMORTEX®
 BULLET • BLAST • FORCED ENTRY - PROTECTION PRODUCTS
 5926 CORRIDOR PKWY SCHERTZ, TX 78154
 TEL: 210-661-8306 800-880-8306 FAX: 210-661-8308
 www.armortex.com