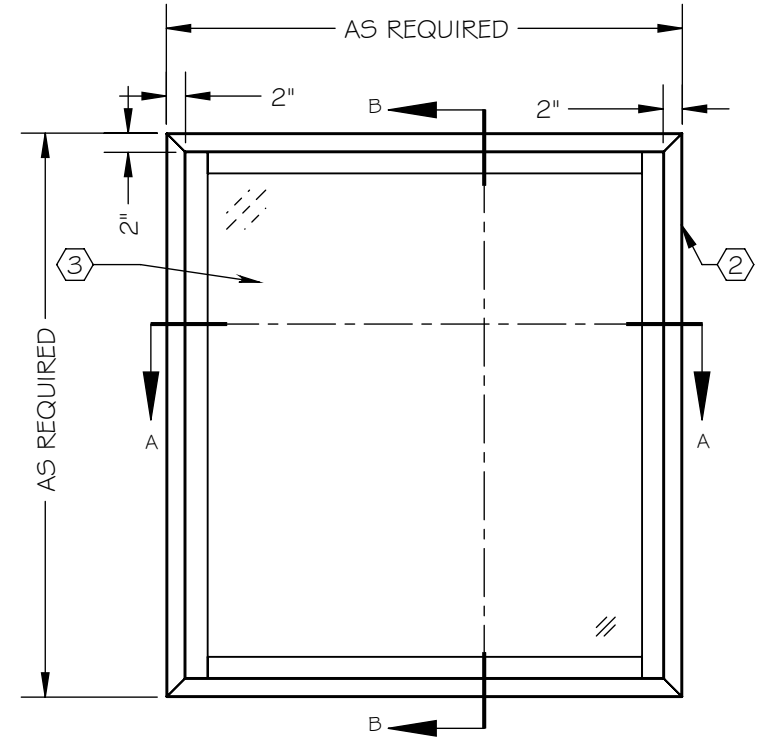
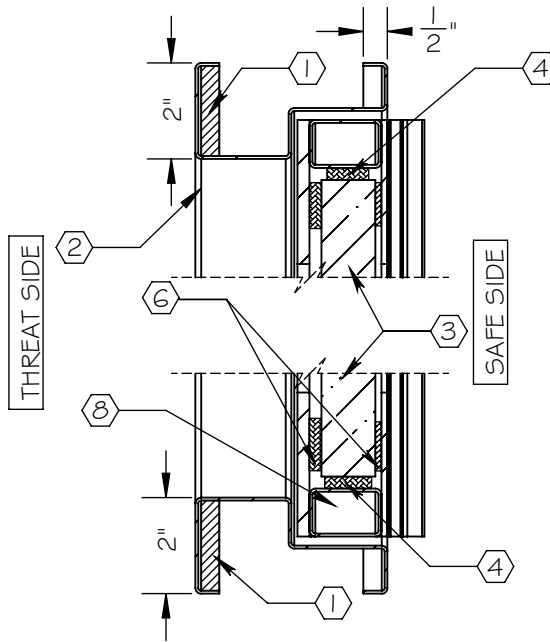


NOTES:

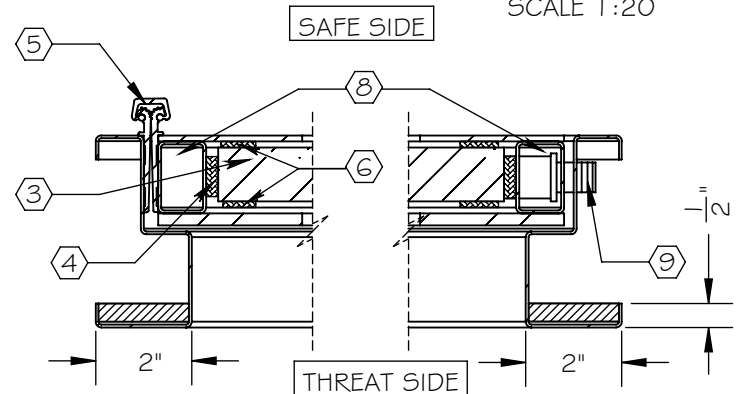
- ① ARMORTEX[®] BULLET RESISTANT ARMOR
- ② 1/6 GA. PRIME PAINTED STEEL FRAME (STAINLESS STEEL OPTIONAL)
- ③ ARMORTEX[®] BULLET RESISTANT GLAZING
- ④ NEOPRENE SETTING BLOCKS (TYP. 2 PER SIDE AS REQUIRED)
- ⑤ CONTINUOUS GEAR HINGE
- ⑥ GLAZING TAPE
- ⑦ ANCHORS AS REQUIRED (NOT SHOWN)
- ⑧ 1" X 1-1/2" RECTANGULAR STEEL TUBING
- ⑨ LATCH



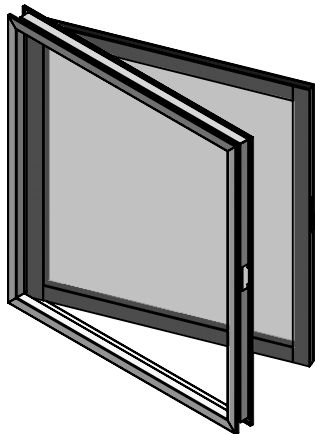
ELEVATION VIEW
SCALE 1:20



SECTION B-B
SCALE 1:4



SECTION A-A
SCALE 1:4



SCALE: AS NOTED	TITLE: FIXED WINDOW HM OPERABLE	UNLESS OTHERWISE SPECIFIED: DIMENSIONS ARE IN INCHES TOLERANCES: FRACTIONAL: ±1/16" ANGULAR: ±1° TWO PLACE DECIMAL ±.01 THREE PLACE DECIMAL ±.005	ARMORTEX[®] BULLET • BLAST • FORCED ENTRY - PROTECTION PRODUCTS 5926 CORRIDOR PKWY SCHERTZ, TX 78154 TEL: 210-661-8306 800-880-8306 FAX: 210-661-8308 www.armortex.com
DATE: 06-19-2015	NOTE: WI-FW-HM-OP		
DRAWN BY: M. FREEMAN	SHEET NUMBER: 1 OF 1		