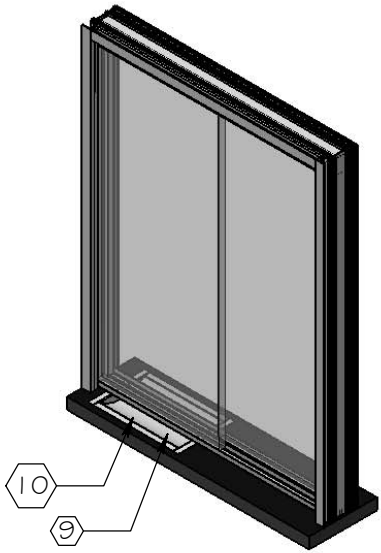
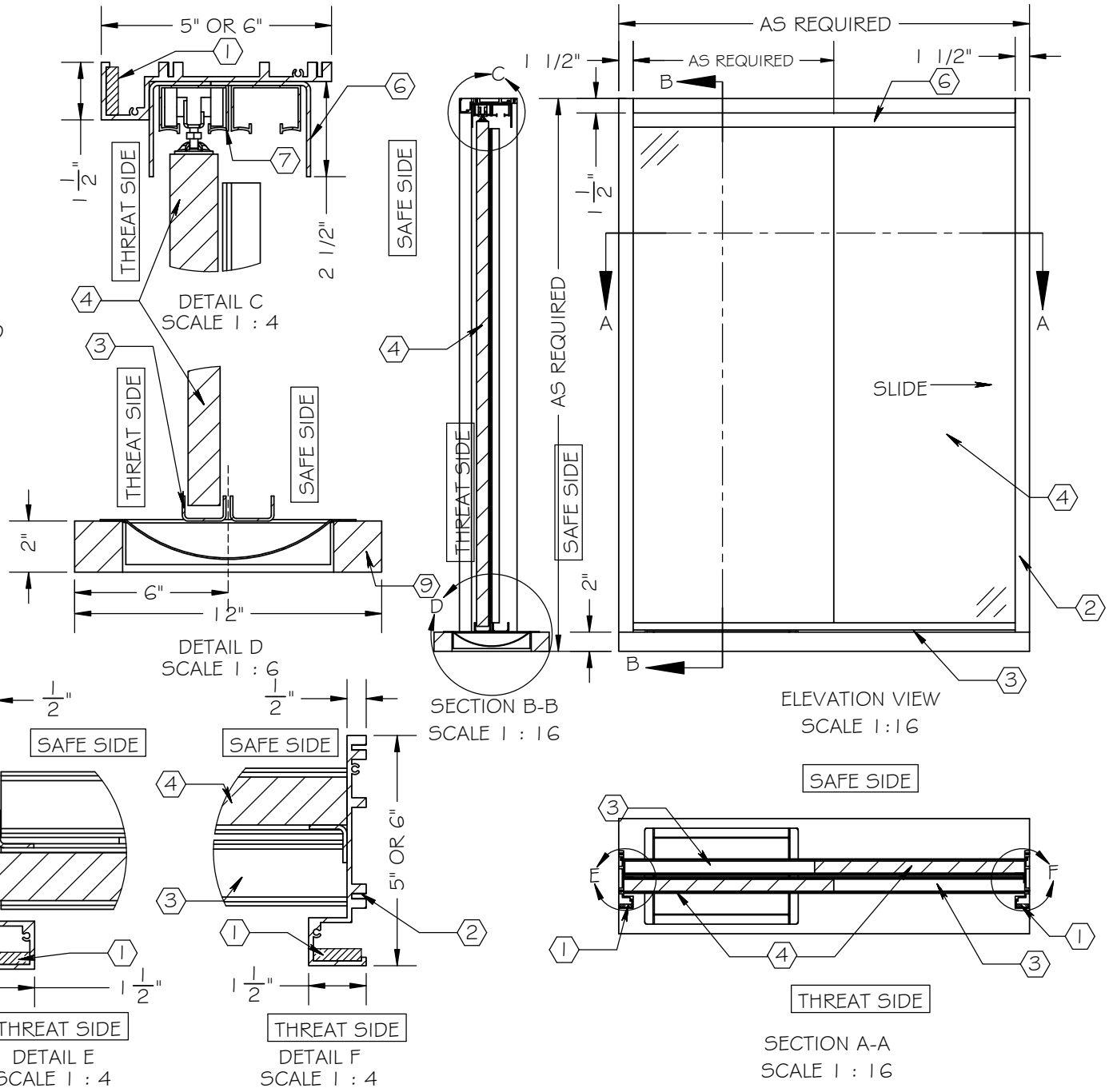


NOTES:

- ① ARMORTEX® BULLET RESISTANT ARMOR
- ② EXTRUDED ALUMINUM FRAME (CLEAR ANODIZED)
- ③ STAINLESS STEEL TRACK
- ④ ARMORTEX® BULLET RESISTANT GLAZING
- ⑤ 1/4" Ø QUICK RELEASE PIN W/ NYLON COATED CABLE (NOT SHOWN)
- ⑥ DOUBLE STAINLESS STEEL ROLLER GUARD
- ⑦ ROLLER TRACK
- ⑧ HANDPULL (NOT SHOWN)
- ⑨ STAINLESS STEEL DEAL TRAY
- ⑩ HIGH PRESSURE LAMINATED BLACK PLASTIC SHELF (STAINLESS STEEL OPTIONAL)
- ⑪ ANCHORS AS REQUIRED (NOT SHOWN)



| | |
|----------------------|--|
| SCALE: AS NOTED | TITLE: TRANSACTION WINDOW ALUMINUM SLIDING |
| DATE: 06-24-2015 | MODEL: WI-TW-AL-SW |
| DRAWN BY: M. FREEMAN | SHEET NUMBER: 1 OF 1 |

UNLESS OTHERWISE SPECIFIED:
 DIMENSIONS ARE IN INCHES
 TOLERANCES:
 FRACTIONAL: ±1/16"
 ANGULAR: ±1°
 TWO PLACE DECIMAL ±.01
 THREE PLACE DECIMAL ±.005

ARMORTEX®
 BULLET • BLAST • FORCED ENTRY - PROTECTION PRODUCTS
 5926 CORRIDOR PKWY SCHERTZ, TX 78154
 TEL: 210-661-8306 800-880-8306 FAX: 210-661-8308
 www.armortex.com