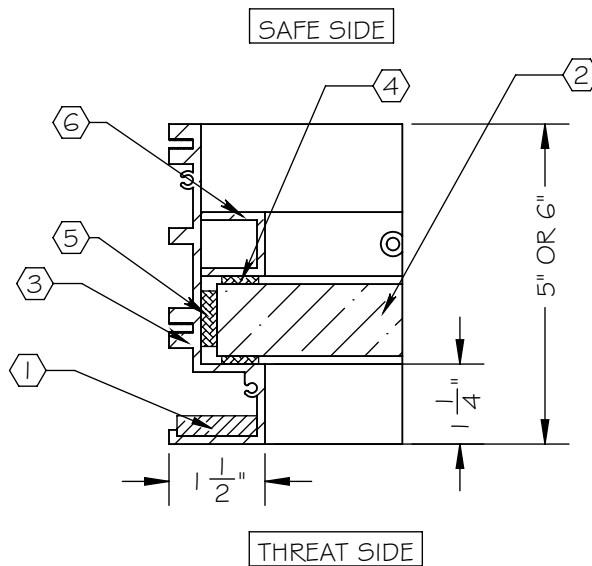
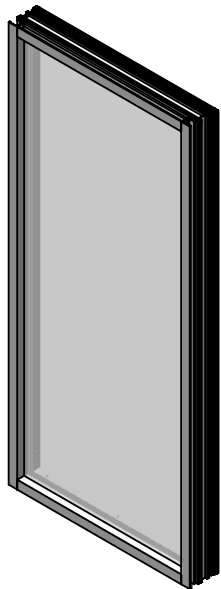
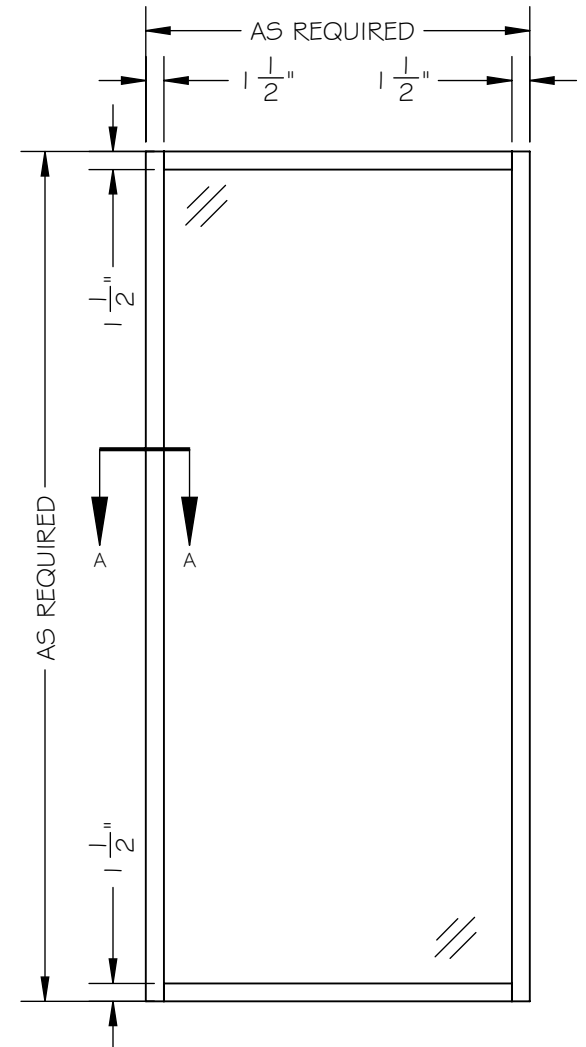


NOTES:

- ① ARMORTEX<sup>®</sup> BULLET RESISTANT ARMOR
- ② ARMORTEX<sup>®</sup> BULLET RESISTANT GLAZING
- ③ EXTRUDED ALUMINUM FRAME (CLEAR ANODIZED)
- ④ GLAZING TAPE
- ⑤ NEOPRENE SETTING BLOCKS
- ⑥ REMOVABLE STOP 1" X 1"
- ⑦ ANCHORS AS REQUIRED (NOT SHOWN)



SECTION A-A  
SCALE 1 : 3



ELEVATION VIEW  
SCALE 1:16

SCALE: AS NOTED	TITLE: FIXED WINDOW ALUMINUM	<small>UNLESS OTHERWISE SPECIFIED:          DIMENSIONS ARE IN INCHES          TOLERANCES:          FRACTIONAL: ±1/16"          ANGULAR: ±1°          TWO PLACE DECIMAL ±.01          THREE PLACE DECIMAL ±.005</small>	<b>ARMORTEX<sup>®</sup></b> BULLET • BLAST • FORCED ENTRY - PROTECTION PRODUCTS 5926 CORRIDOR PKWY SCHERTZ, TX 78154 TEL: 210-661-8306 800-880-8306 FAX: 210-661-8308 www.armortex.com
DATE: 06-18-2015	MODEL: WI-FW-AL-RS		
DRAWN BY: M. FREEMAN	SHEET NUMBER: 1 OF 1		