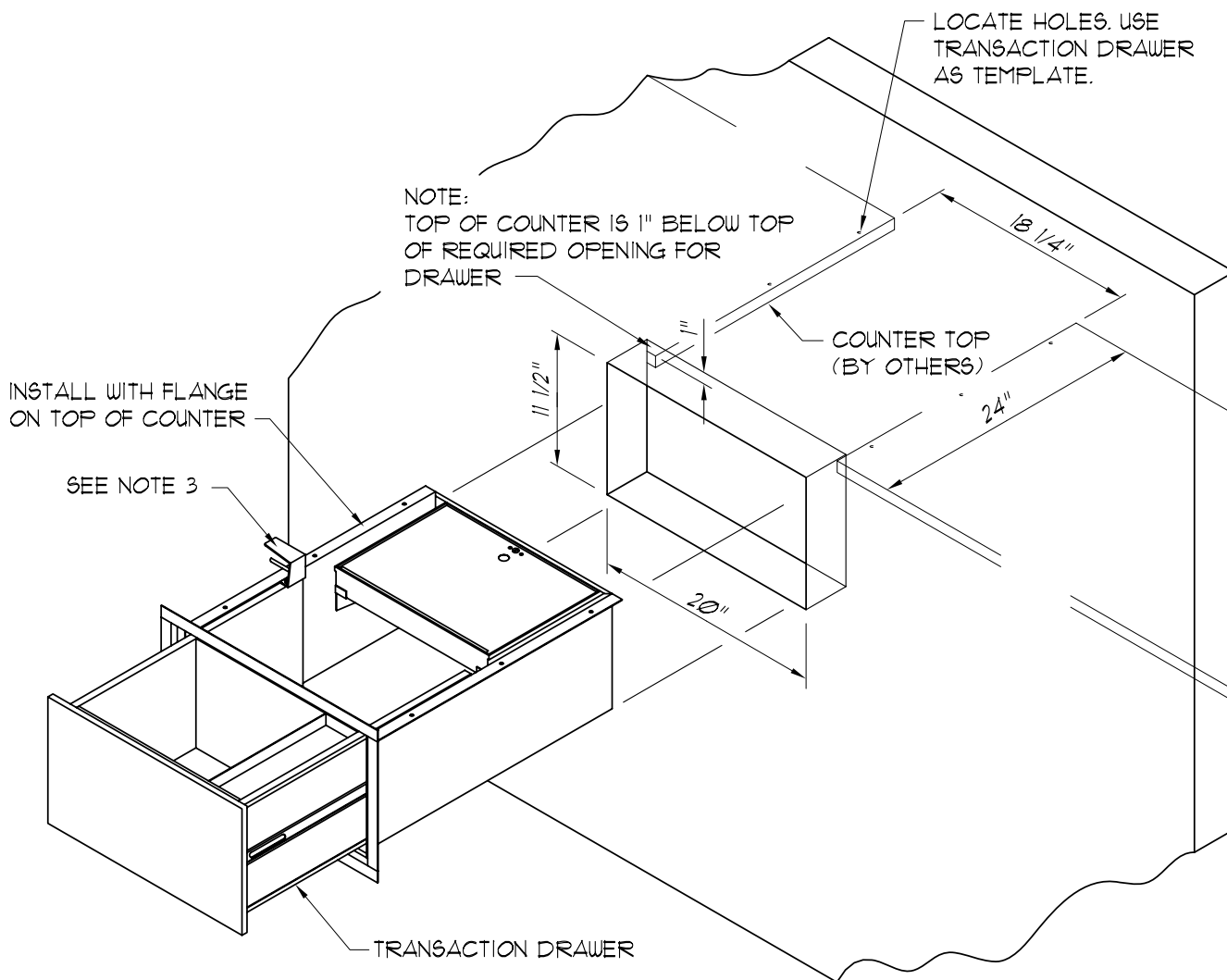


TRANSACTION DRAWER INSTALLATION INSTRUCTION MODEL SS-10D

1. CUT OPENING IN WALL
2. CUT COUNTER TOP OPENING AS SHOWN ON DRAWING
3. REMOVE DRAWER HANDLE
4. SLIDE DRAWER THROUGH OPENING AND SET WITH FLANGES ON TOP OF COUNTER
5. LOCATE DRAWER IN POSITION AND FASTEN WITH SCREW (6) (BY OTHERS)
6. REFIT DRAWER HANDLE
7. INSURE THE DRAWER IS CORRECTLY LOCATED AND IS FREE TO SLIDE SMOOTHLY

FOR UNUSUAL INSTALLATIONS, CONTACT ARMORTEX® FOR TECHNICAL ASSISTANCE.



C:\ARMORTEX MASTERS\INSTALLATION\INST9521.DWG.DWG 05/22/06 @ 11:40 User: operez

REVISIONS			ARMORTEX ® BULLET / BLAST RESISTANT PRODUCTS		BALLISTIC LEVEL	
No.	DESCRIPTION	DATE	5926 CORRIDOR PKWY SCHERTZ, TX 78154		DRN. BY:	DATE:
			TEL: 210-661-8306 800-880-8306 FAX: 210-661-8308		A. PEREZ	03-14-03
			TITLE: ARMORTEX® BULLET RESISTANT TRANSACTION DRAWER MODEL SS-10D		CHKD. BY:	DATE:
			UNLESS OTHERWISE SPECIFIED ALL DIMENSIONS ARE IN INCHES		B. LEWIS	05-28-09
			SCALE	PROJECT No.	DRAWING No.	SHEET
			NONE		INST9521	1 OF 1