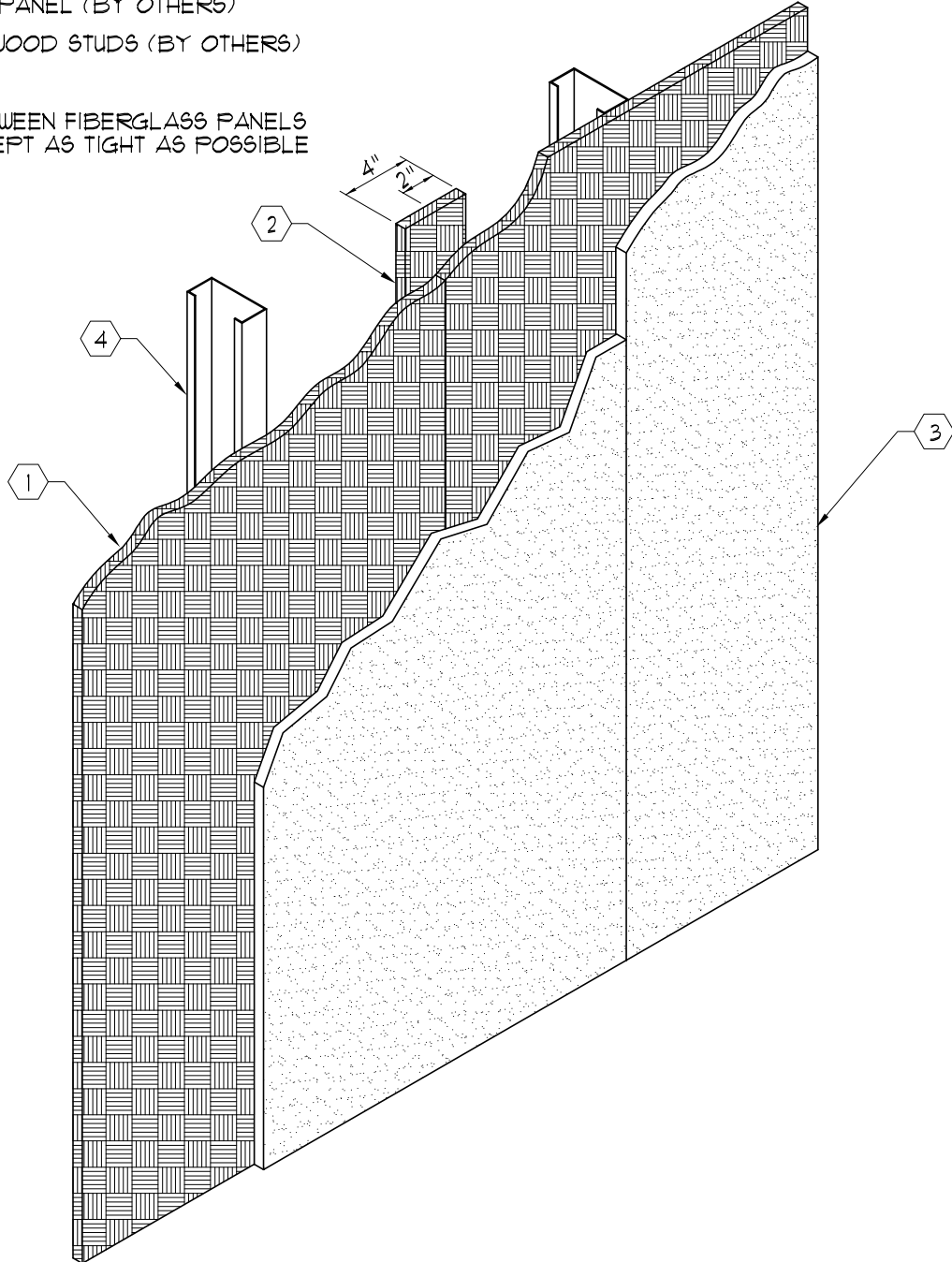


NOTES:

- ① ARMORTEX® BULLET RESISTANT FIBERGLASS PANEL
- ② BATTEN STRIP (CUT FROM FIBERGLASS FULL SHEET)
- ③ DRY WALL PANEL (BY OTHERS)
- ④ STEEL OR WOOD STUDS (BY OTHERS)

NOTE:

JOINTS BETWEEN FIBERGLASS PANELS
MUST BE KEPT AS TIGHT AS POSSIBLE



C:\MASTERS\ARMORTEX\FIBERINS\F1010501.DWG.DWG 08/25/03 @ 14:19 User: andy_perez

REVISIONS			SAFEGUARD SECURITY SERVICES, Ltd. 4728 GOLDFIELD, BLDG. 8 SAN ANTONIO, TX. 78218 TEL: 210-661-8306 800-880-8306 FAX: 210-661-8308		BALLISTIC LEVEL	
No.	DESCRIPTION	DATE			DRN.BY:	DATE:
			TITLE: ARMORTEX® BULLET RESISTANT FIBERGLASS INSTALLATION		PROJECT NAME:	
			UNLESS OTHERWISE SPECIFIED ALL DIMENSIONS ARE IN INCHES		SCALE: NONE	PROJECT No.:
					DRN.BY: A. Perez	DATE: 03-14-03
					CHKD.BY:	DATE:
					DRAWING No. F1010501	SHEET 1 OF 1