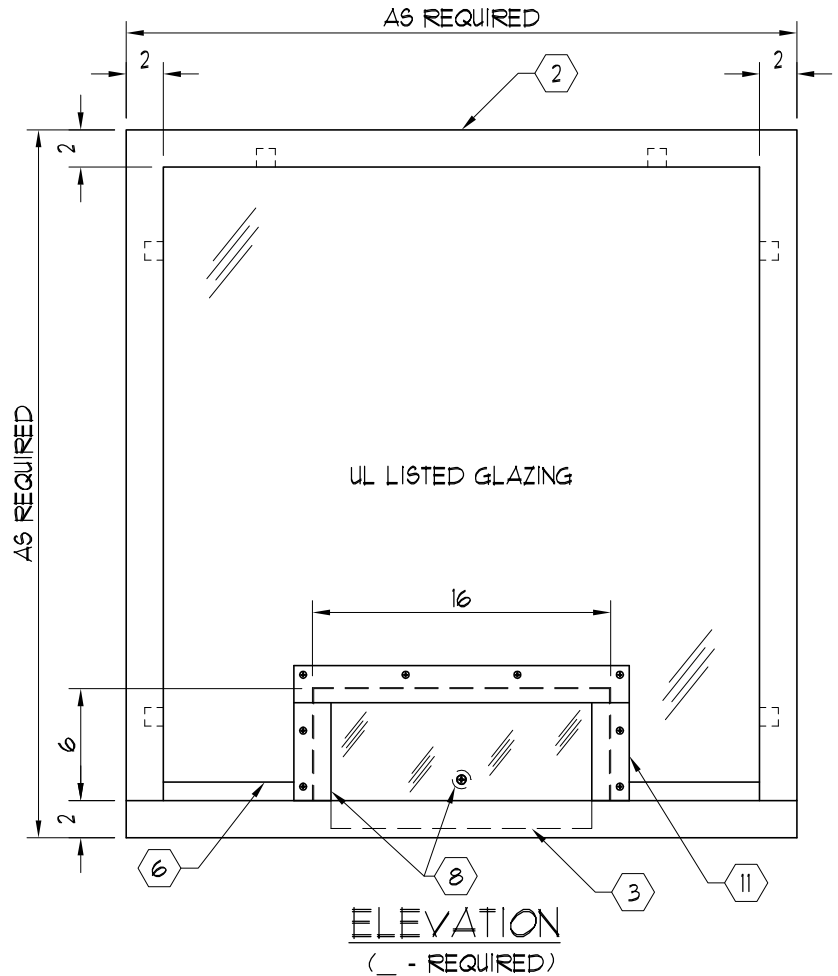
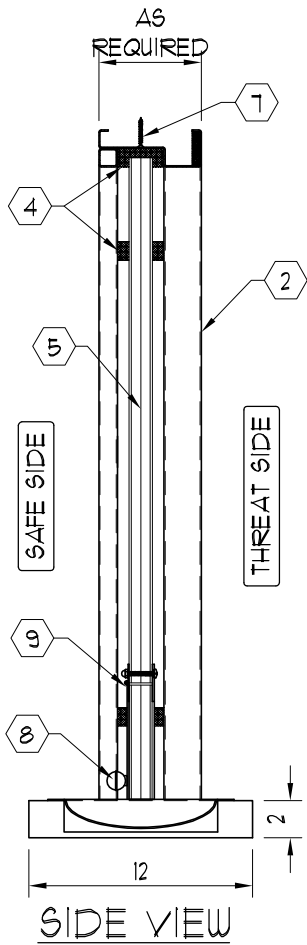
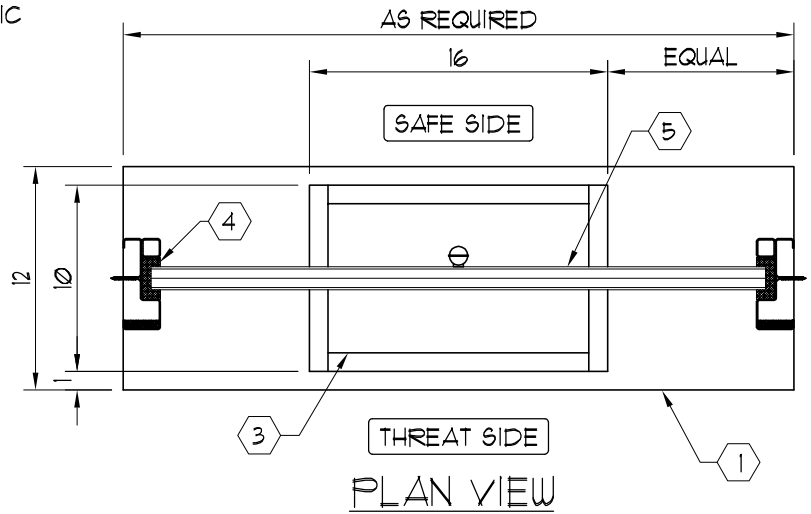


NOTES:

- ① HIGH PRESSURE LAMINATED BLACK PLASTIC SHELF (STAINLESS STEEL OPTIONAL)
- ② 16 GA. PRIME PAINTED STEEL FRAME (STAINLESS STEEL OPTIONAL)
- ③ 16 GA. STAINLESS STEEL DIP TRAY (MODEL RMDT-1016)
- ④ NATURAL VOICE SPACER
- ⑤ UL LISTED ARMORTEX® BULLET RESISTANT GLAZING
- ⑥ 20 GA. STAINLESS STEEL CAP
- ⑦ ANCHORS AS REQUIRED, BY OTHERS
- ⑧ PULL AND SECURITY LATCH
- ⑨ STAINLESS STEEL CONTINUOUS HINGE
- ⑩ TREMCO-440 GLAZING TAPE
- ⑪ 12 GA. STAINLESS STEEL ASTRAGAL (BOTH ENDS AND BOTH SIDES)
- ⑫ UL LISTED ARMORTEX® BULLET RESISTANT COMPOSITES



C:\ARMORTEX MASTERS - 2007\WINDOWS\W1011031.DWG.DWG 02/13/07 @ 11:37 User: aperez

REVISIONS		
No.	DESCRIPTION	DATE

ARMORTEX® BULLET / BLAST RESISTANT PRODUCTS
 5926 CORRIDOR PKWY SCHERTZ, TX 78154
 TEL: 210-661-8306 800-880-8306 FAX: 210-661-8308

TITLE: ARMORTEX® BULLET RESISTANT THREE SIDED HOLLOW METAL TRANSACTION WINDOW WITH HINGED PANEL

PROJECT NAME: _____

SCALE: NONE PROJECT No. _____

UNLESS OTHERWISE SPECIFIED ALL DIMENSIONS ARE IN INCHES

BALLISTIC LEVEL	
DRN.BY: A. Perez	DATE: 02-16-07
CHKD.BY:	DATE:
DRAWING No. W1011031	SHEET 1 OF 1