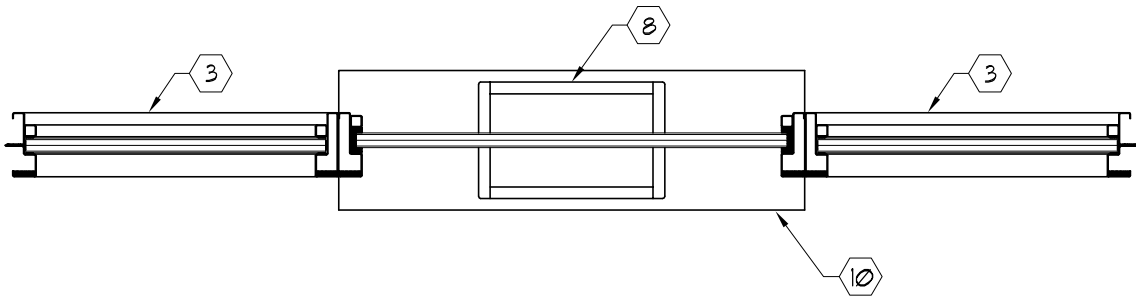
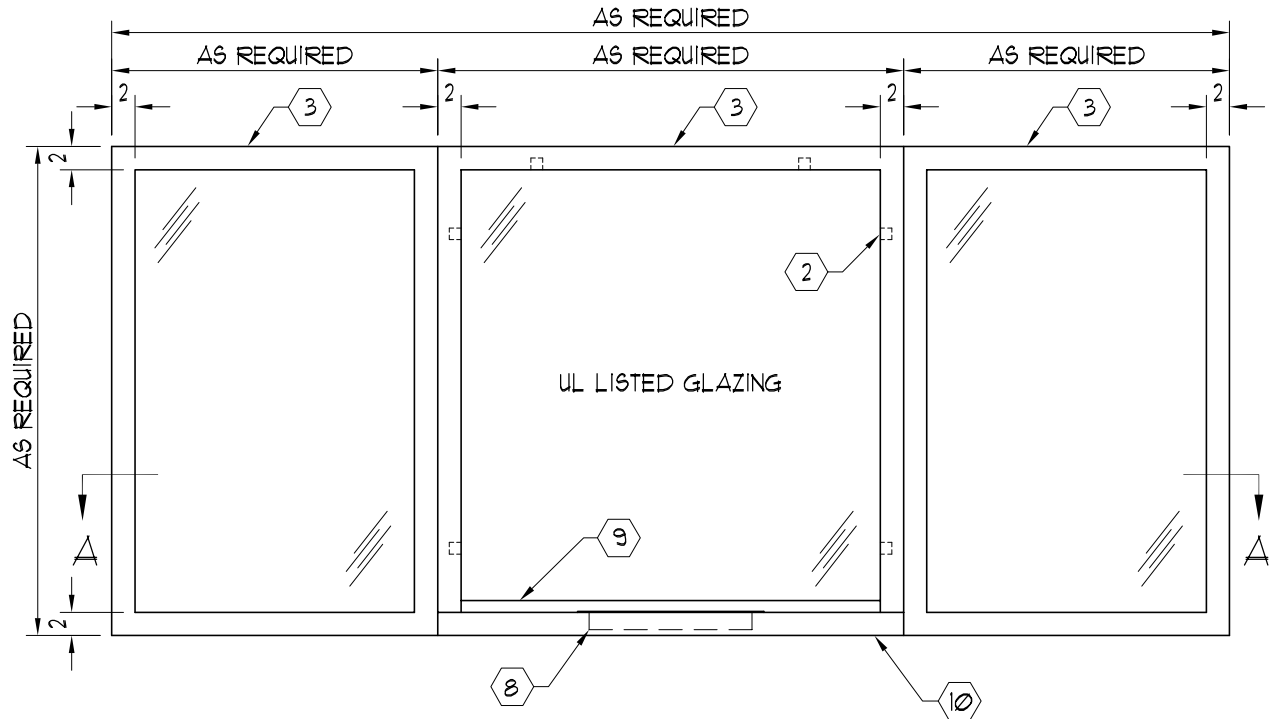


NOTES:

- ① UL LISTED ARMORTEX® BULLET RESISTANT COMPOSITES
- ② NATURAL VOICE SPACER
- ③ 16 GA. PRIME PAINTED STEEL FRAME (STAINLESS STEEL OPTIONAL)
- ④ UL LISTED ARMORTEX® BULLET RESISTANT GLAZING
- ⑤ REMOVABLE STOP 1" x 1"
- ⑥ NEOPRENE SETTING BLOCKS
- ⑦ TREMCO-440 GLAZING TAPE
- ⑧ 16 GA. STAINLESS STEEL DIP TRAY (MODEL RMDT-1016)
- ⑨ 20 GA. STAINLESS STEEL CAP
- ⑩ HIGH PRESSURE LAMINATED BLACK PLASTIC SHELF (STAINLESS STEEL OPTIONAL)
- ⑪ ANCHORS AS REQUIRED (BY OTHERS)



SECTION A-A



ELEVATION
(_ - REQUIRED)

C:\ARMORTEX MASTERS - 2007\WINDOWS\W1011029.DWG.DWG 02/13/07 @ 11:27 User: aperez

| REVISIONS | | | ARMORTEX® BULLET / BLAST RESISTANT PRODUCTS | | BALLISTIC LEVEL | | |
|-----------|-------------|------|---|---------------|-----------------|-------------|--------|
| No. | DESCRIPTION | DATE | 5926 CORRIDOR PKWY SCHERTZ, TX 78154 | | DRN.BY: | DATE: | |
| | | | TEL: 210-661-8306 800-880-8306 FAX: 210-661-8308 | | A. Perez | 02-16-07 | |
| | | | TITLE: | PROJECT NAME: | CHKD.BY: | DATE: | |
| | | | ARMORTEX® BULLET RESISTANT TRANSACTION WINDOW WITH SIDE LITES | | | | |
| | | | UNLESS OTHERWISE SPECIFIED ALL DIMENSIONS ARE IN INCHES | SCALE | PROJECT No. | DRAWING No. | SHEET |
| | | | | NONE | | W1011029 | 1 OF 1 |