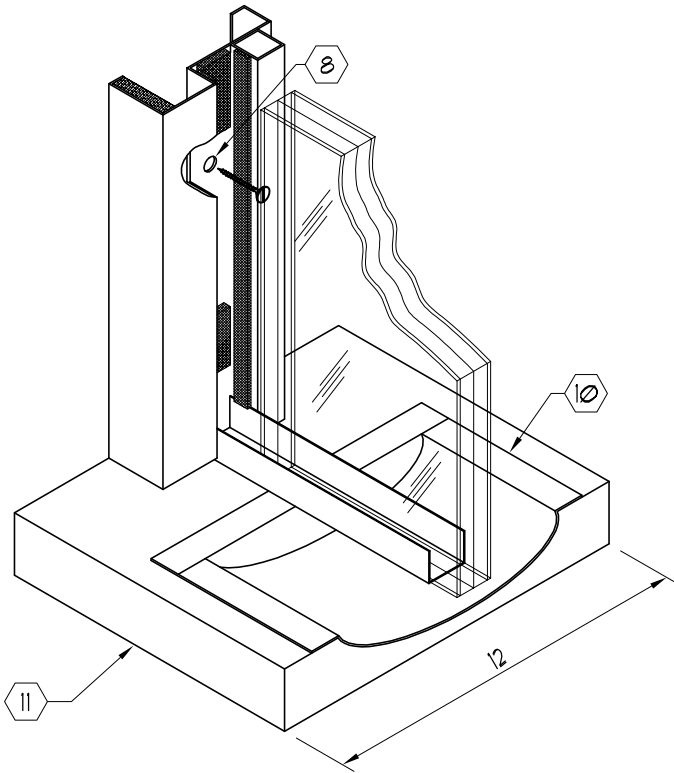
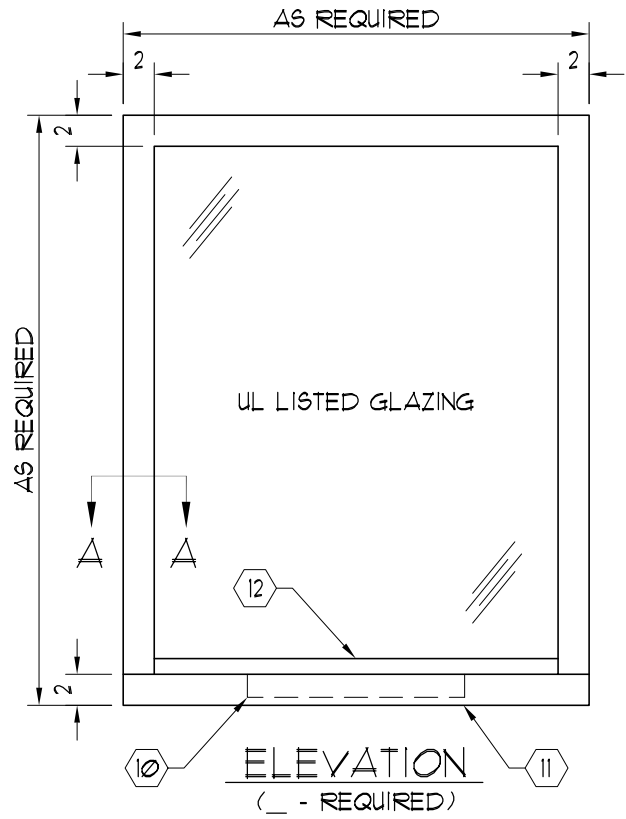
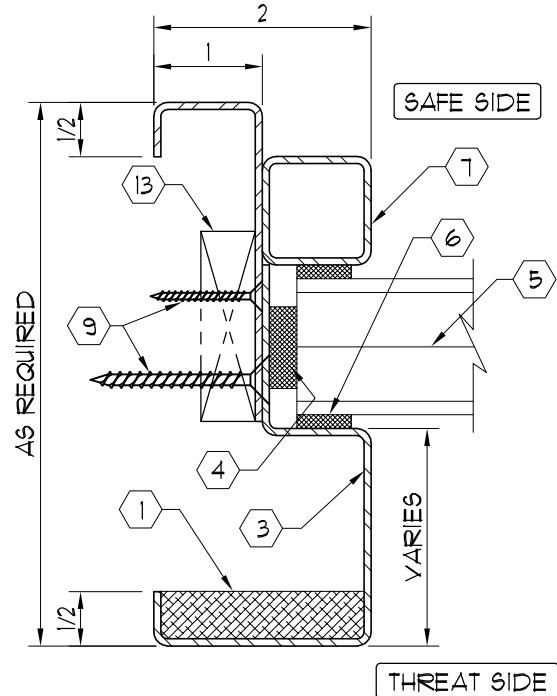


NOTES:

- ① UL LISTED ARMORTEX® BULLET RESISTANT COMPOSITES
- ② FLUSH WELD ALL CORNERS BY MECHANICAL MEANS
- ③ 16 GA. PRIME PAINTED STEEL FRAME (STAINLESS STEEL OPTIONAL)
- ④ NEOPRENE SETTING BLOCKS (TYP. AT 4 SIDES)
- ⑤ UL LISTED ARMORTEX® BULLET RESISTANT GLAZING
- ⑥ TREMCO-440 GLAZING TAPE
- ⑦ REMOVABLE STOP 1" x 1"
- ⑧ FIELD DRILL HOLES AND SET ANCHORS AFTER CORRECTLY POSITIONING BOTH HALVES OF SPLIT FRAME (ANCHORS, BY OTHERS)
- ⑨ ANCHORS AS REQUIRED (BY OTHERS)
- ⑩ 16 GA. STAINLESS STEEL DIP TRAY (MODEL RMDT-1016)
- ⑪ HIGH PRESSURE LAMINATED BLACK PLASTIC SHELF (STAINLESS STEEL OPTIONAL)
- ⑫ 20 GA. STAINLESS STEEL CAP
- ⑬ SHIM AS REQUIRED (BY OTHERS)



THIS VIEW FOR CLARITY ONLY



SECTION A-A

C:\ARMORTEX MASTERS - 2007\WINDOWS\W1011017.DWG.DWG 02/13/07 @ 09:49 User: aperez

REVISIONS			ARMORTEX® BULLET / BLAST RESISTANT PRODUCTS		BALLISTIC LEVEL	
No.	DESCRIPTION	DATE	5926 CORRIDOR PKWY SCHERTZ, TX 78154		DRN.BY:	DATE:
			TEL: 210-661-8306 800-880-8306 FAX: 210-661-8308		A. Perez	02-16-07
TITLE:			PROJECT NAME:		CHKD.BY:	DATE:
MODEL SSTW-17			ARMORTEX® BULLET RESISTANT SPLIT THREE SIDED HOLLOW METAL WINDOW		DRAWING No.	SHEET
UNLESS OTHERWISE SPECIFIED ALL DIMENSIONS ARE IN INCHES			SCALE	PROJECT No.	W1011017	1 OF 1
			NONE			