

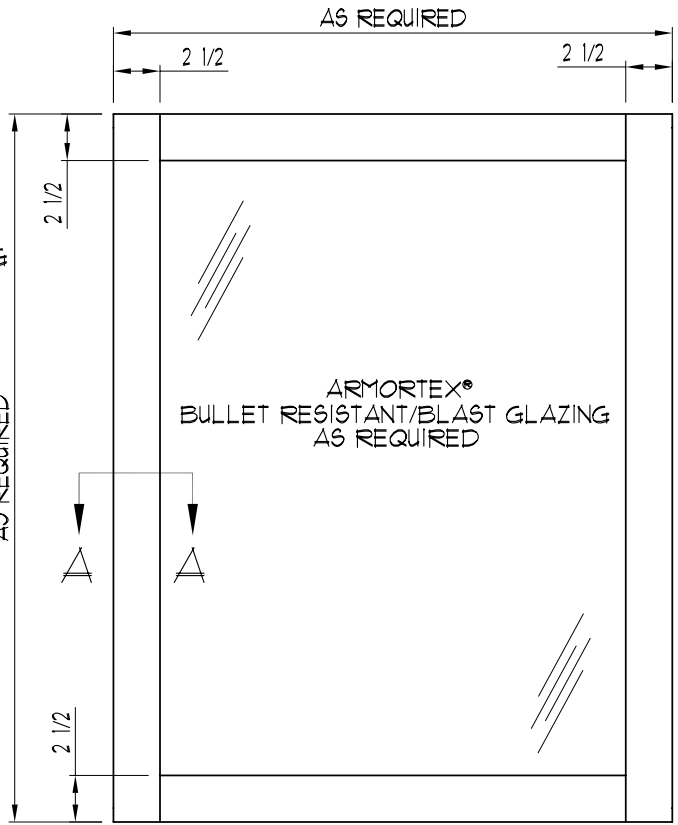
MODEL 625BR/BL

BULLET RESISTANT/BLAST

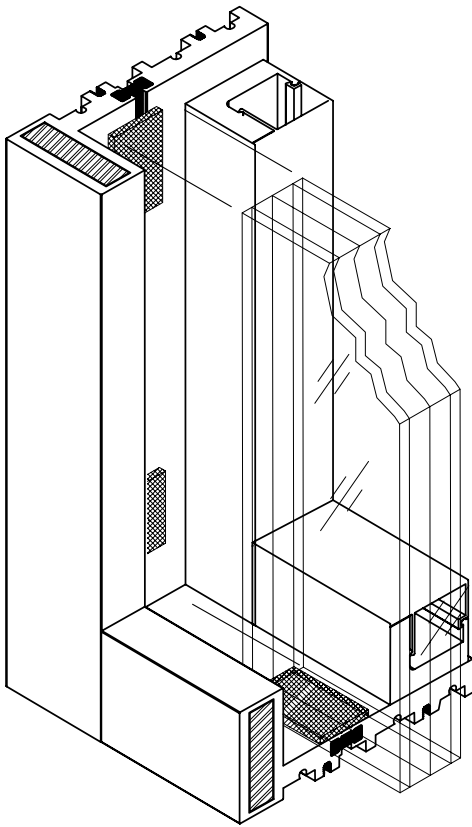
(30cal AP MAXIMUM/42psi MAXIMUM)

NOTES:

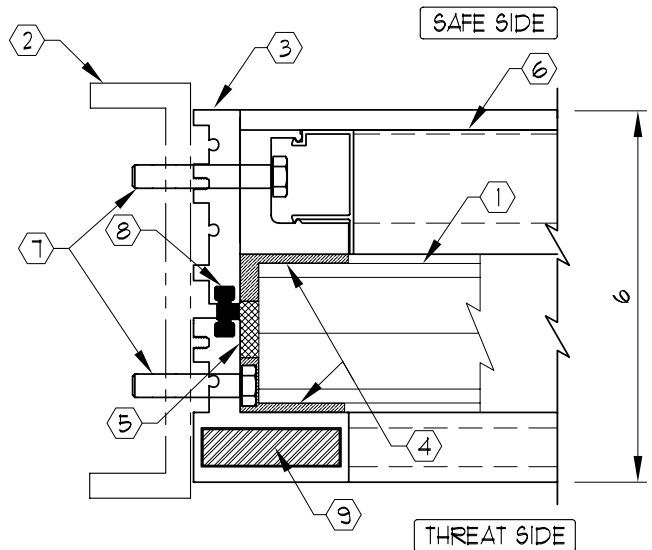
- ① ARMORTEX® BULLET RESISTANT/BLAST GLAZING
- ② EMBEDS WILL VARY PER SPECIFIC BLAST-INSTALLATION REQUIREMENTS
- ③ EXTRUDED ALUMINUM FRAME (CLEAR ANODIZED)
- ④ DOW CORNING 995 STRUCTURAL SILICONE
- ⑤ NEOPRENE SETTING BLOCKS
- ⑥ REMOVABLE STOP
- ⑦ HHCS 3/8"-16NC, GRADE 8 ANCHOR BOLTS OR AS REQUIRED, BY ARMORTEX®
- ⑧ URETHANE THERMAL BRAKE
- ⑨ ARMORTEX® HI-HARD BALLISTIC STEEL (IF REQUIRED)



ELEVATION



THIS VIEW FOR CLARITY ONLY



SECTION A-A

S:\BLAST WINDOWS\W1011740.DWG.DWG 10/02/08 @ 15:21 User: blewis

REVISIONS			ARMORTEX®		BULLET / BLAST RESISTANT PRODUCTS		BALLISTIC LEVEL	
No.	DESCRIPTION	DATE	5926 CORRIDOR PKWY SCHERTZ, TX 78154		30 cal. AP MAXIMUM/42psi MAXIMUM THERMALLY BROKEN ALUMINUM		psi	msec
			TEL: 210-661-8306 800-880-8306 FAX: 210-661-8308		PROJECT NAME:		DRN.BY:	DATE:
			TITLE: ARMORTEX® MODEL 625BR/BL WINDOW				B. LEWIS	02-20-08
			UNLESS OTHERWISE SPECIFIED ALL DIMENSIONS ARE IN INCHES		SCALE	PROJECT No.	CHKD.BY:	DATE:
					NONE			
							DRAWING No.	SHEET
							W1011740	1 OF 1